

1



2

## Session Overview



- 01.**

**What is Research?** →

What do you think when you hear "research"?
- 02.**

**My STEM Story** →

How did I get to where I am today?
- 03.**

**Numbers Tell a Story** →

What do the numbers say about individuals with disabilities in STEM?
- 04.**

**Reflections** →

What can we do to encourage students of all abilities to pursue their passions?

3



# 01.

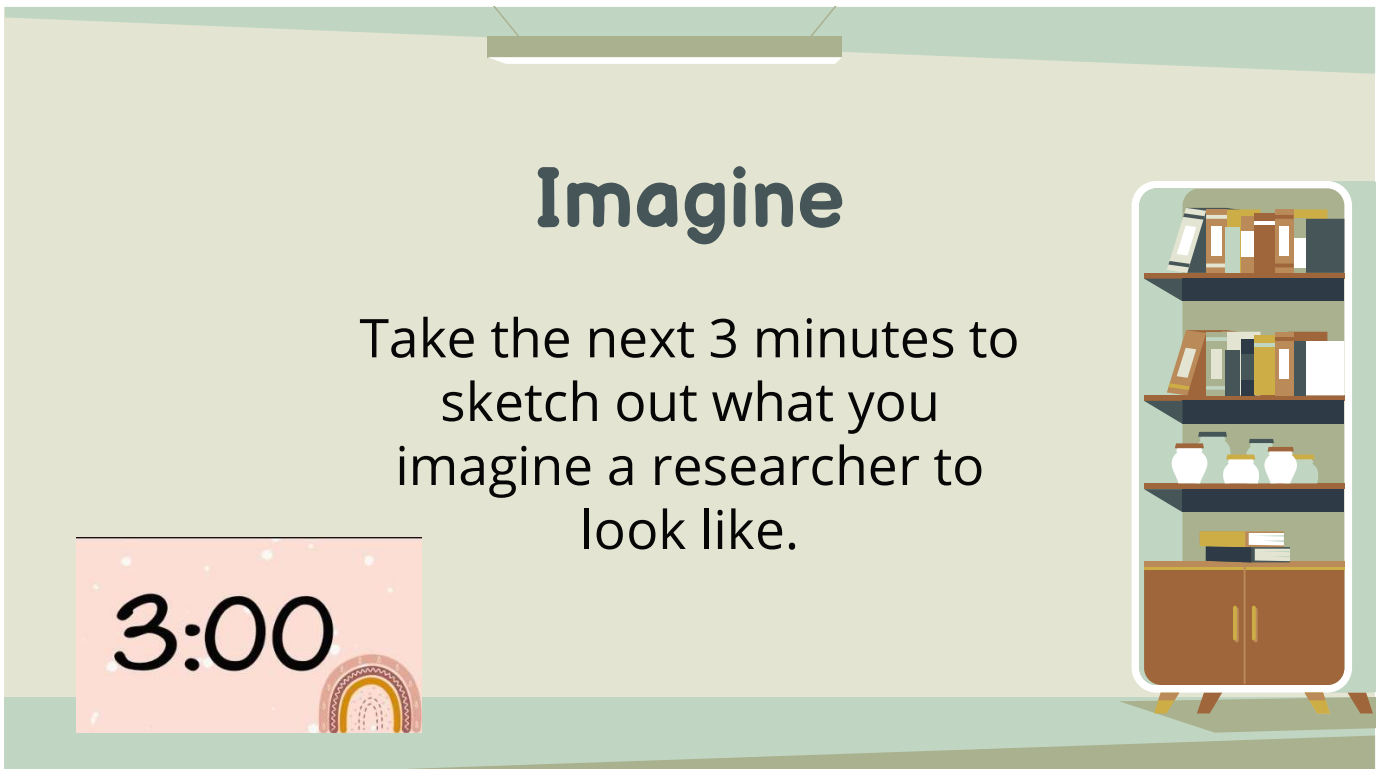
## What is Research?

What do you think when you hear "research"?

4



5



6

# Does your researcher look like this?



7

# Or does your researcher look like this?



8

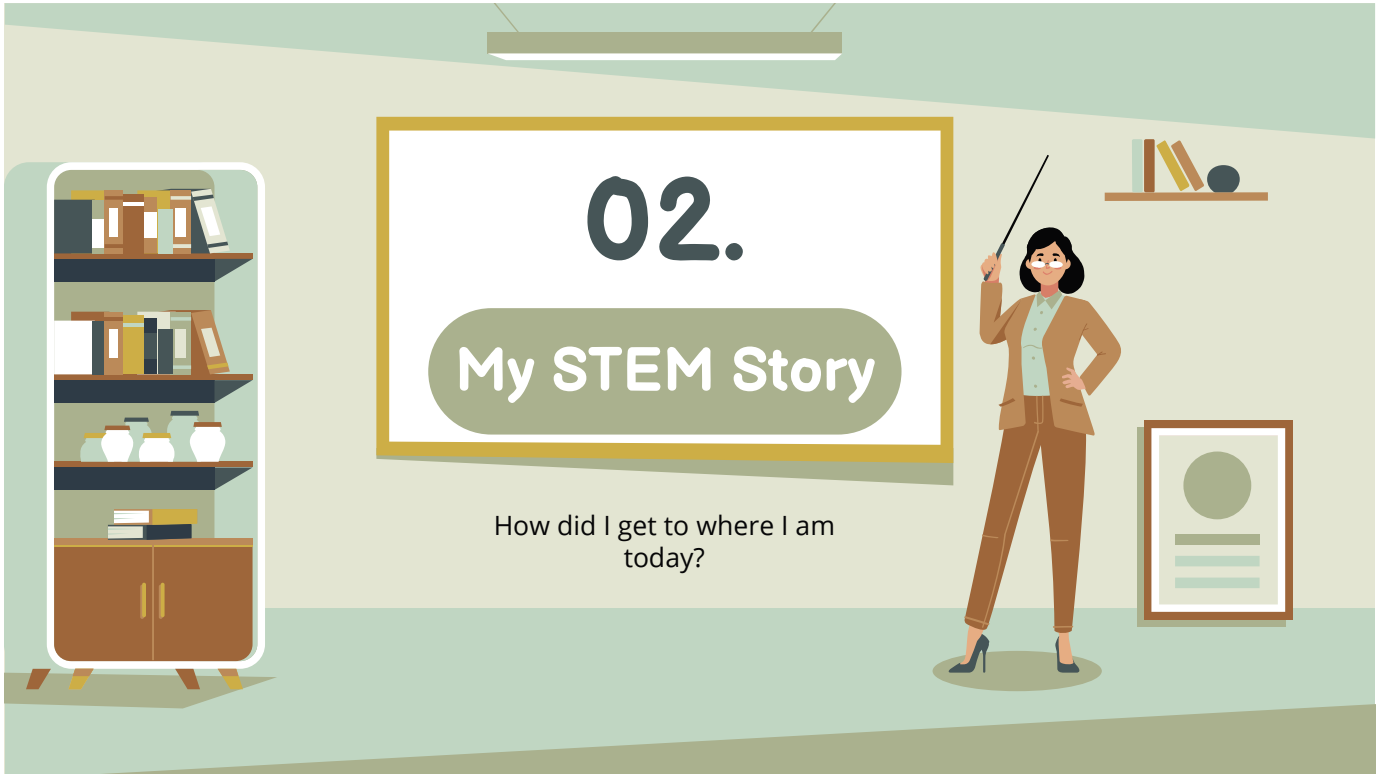


9

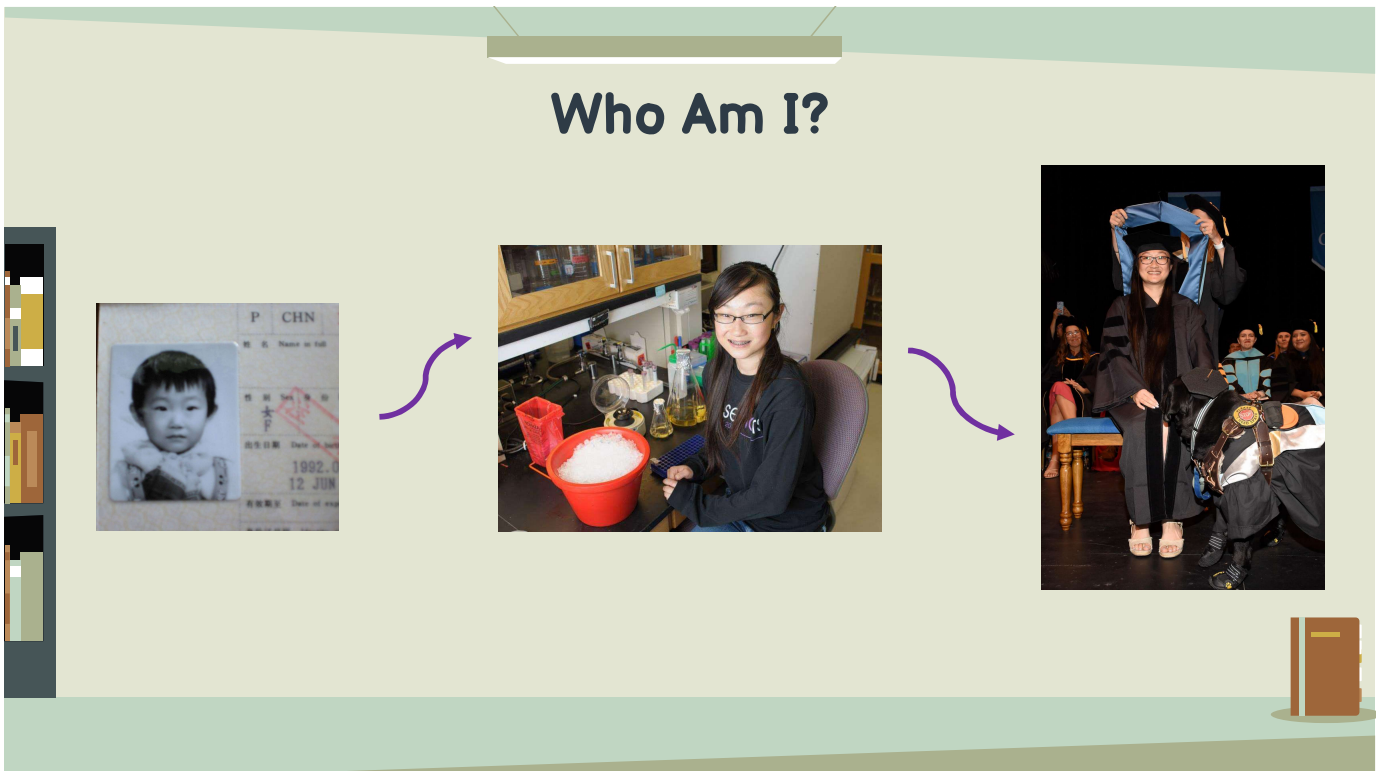
## What is Research?

- Research, as defined by Oxford Languages, is "the systematic investigation into and study of materials and sources in order to establish facts and reach new conclusions."
- Research, as I see it, is using data to support a finding.
  - Any field of study can involve research
  - Shopping for a better price is research

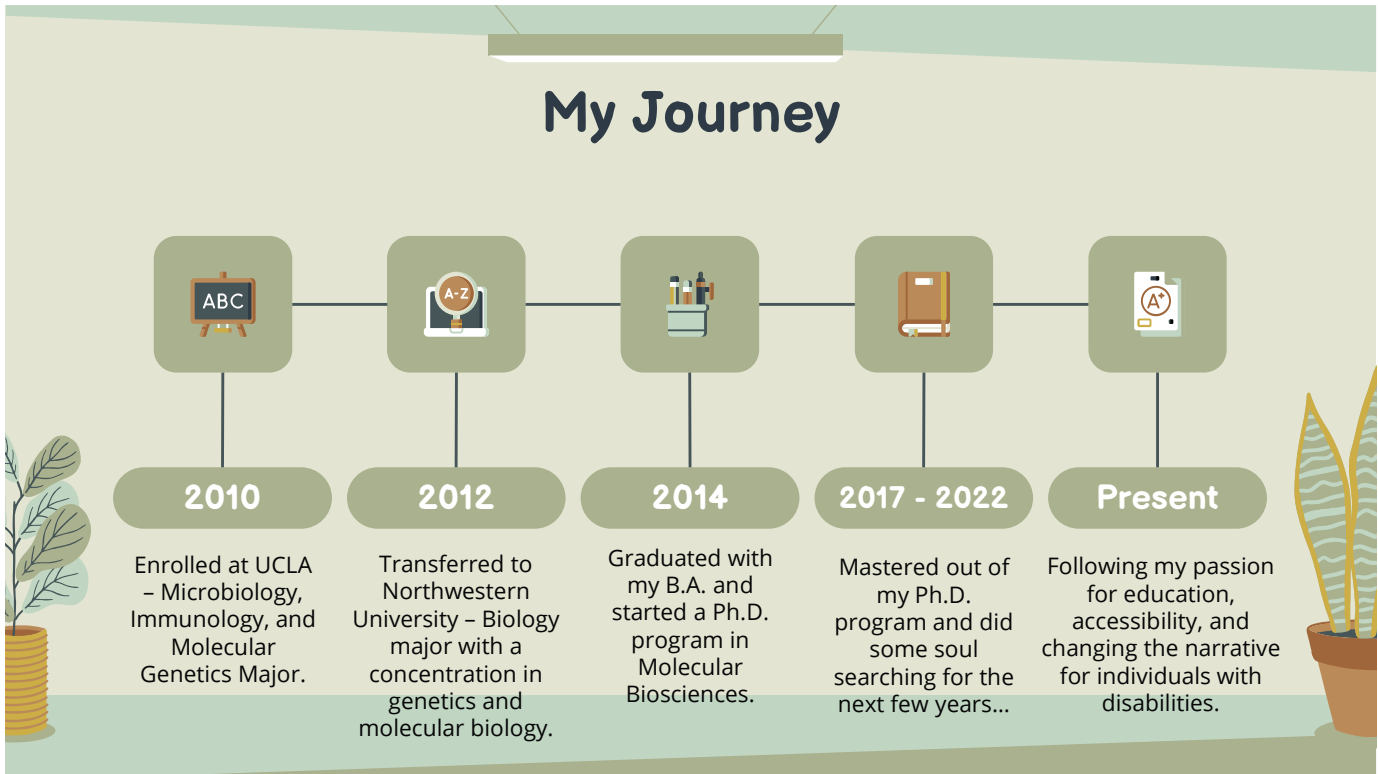
10



11



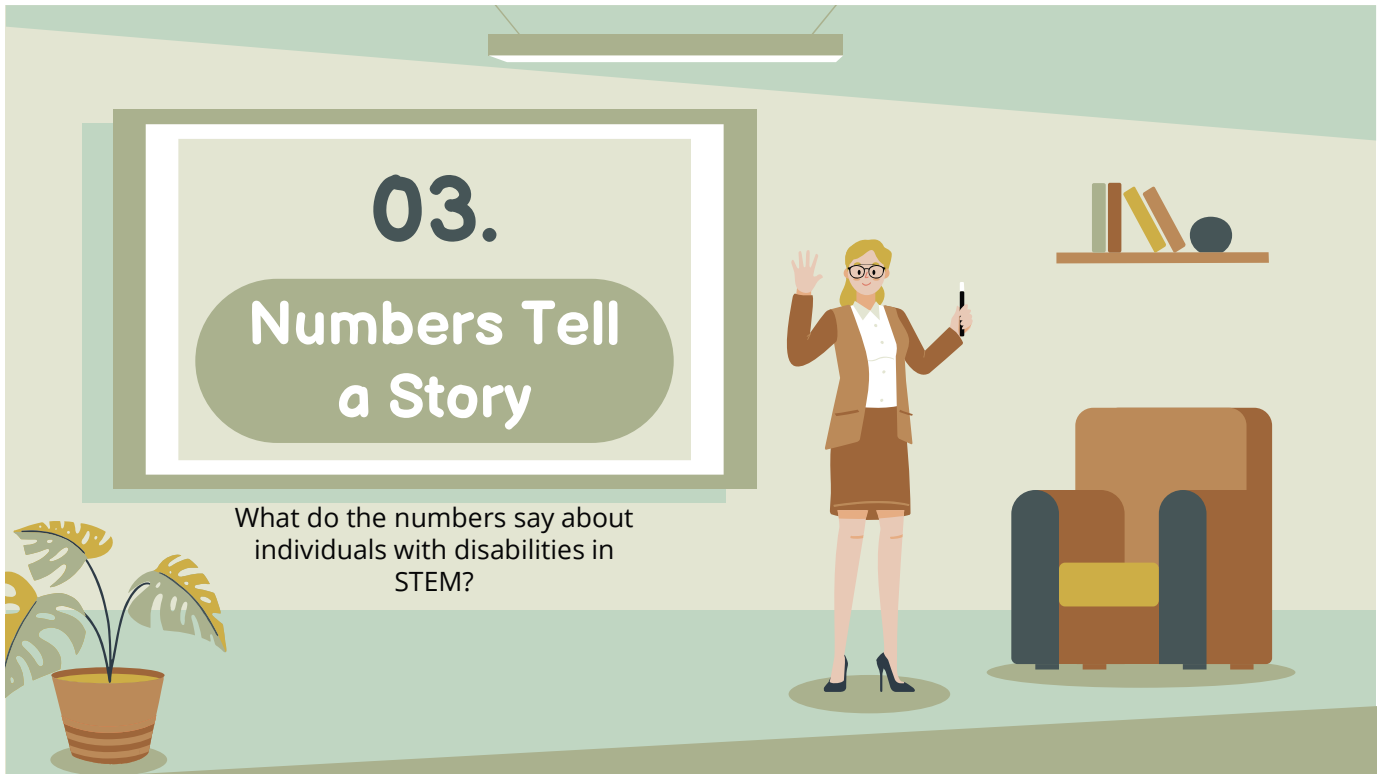
12



13



14

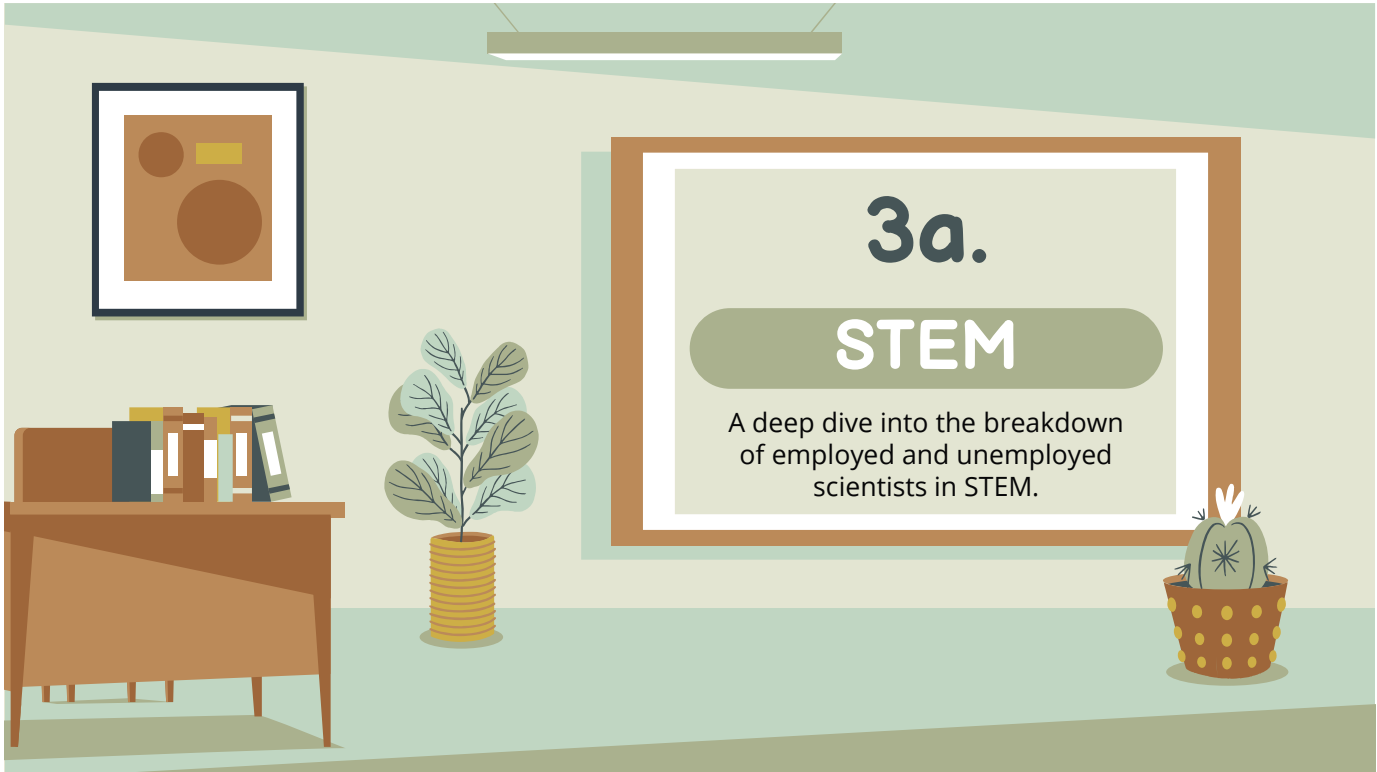


15

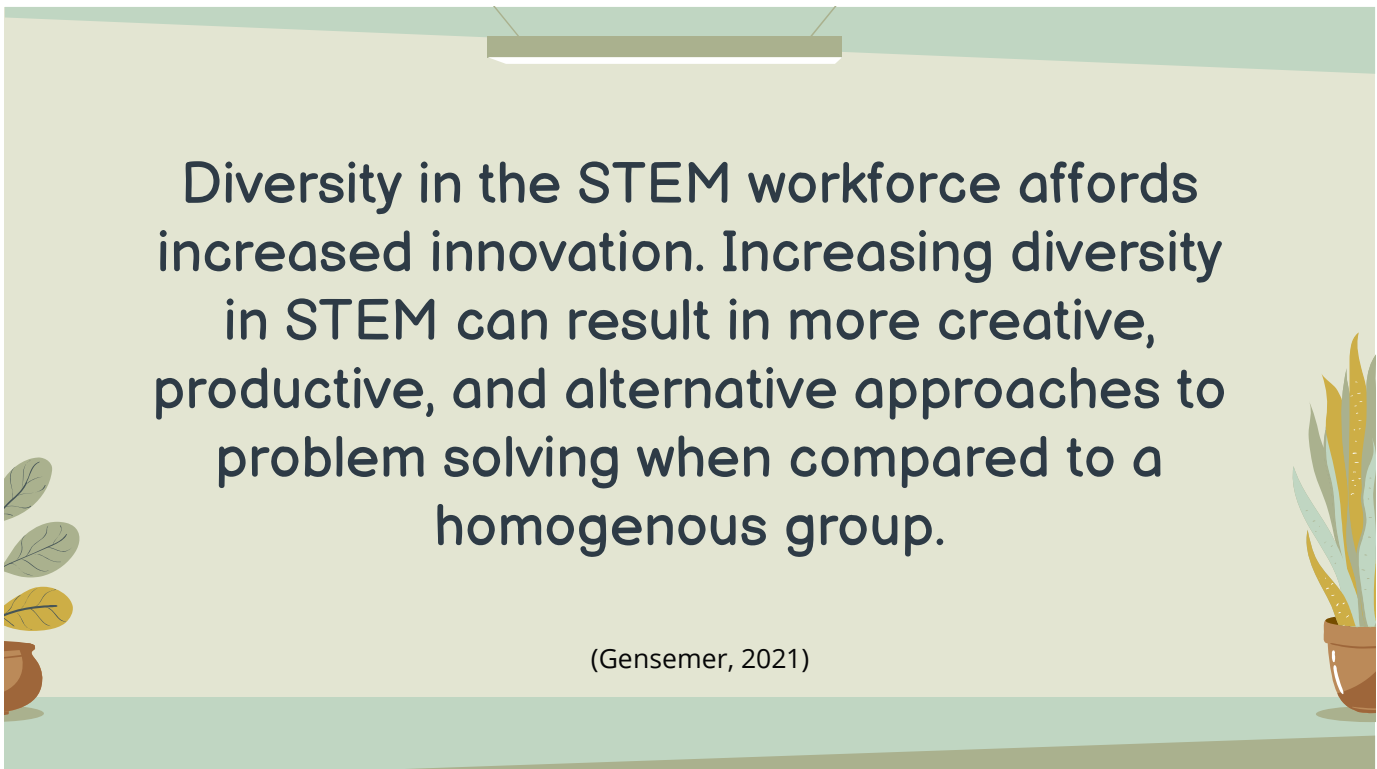


16

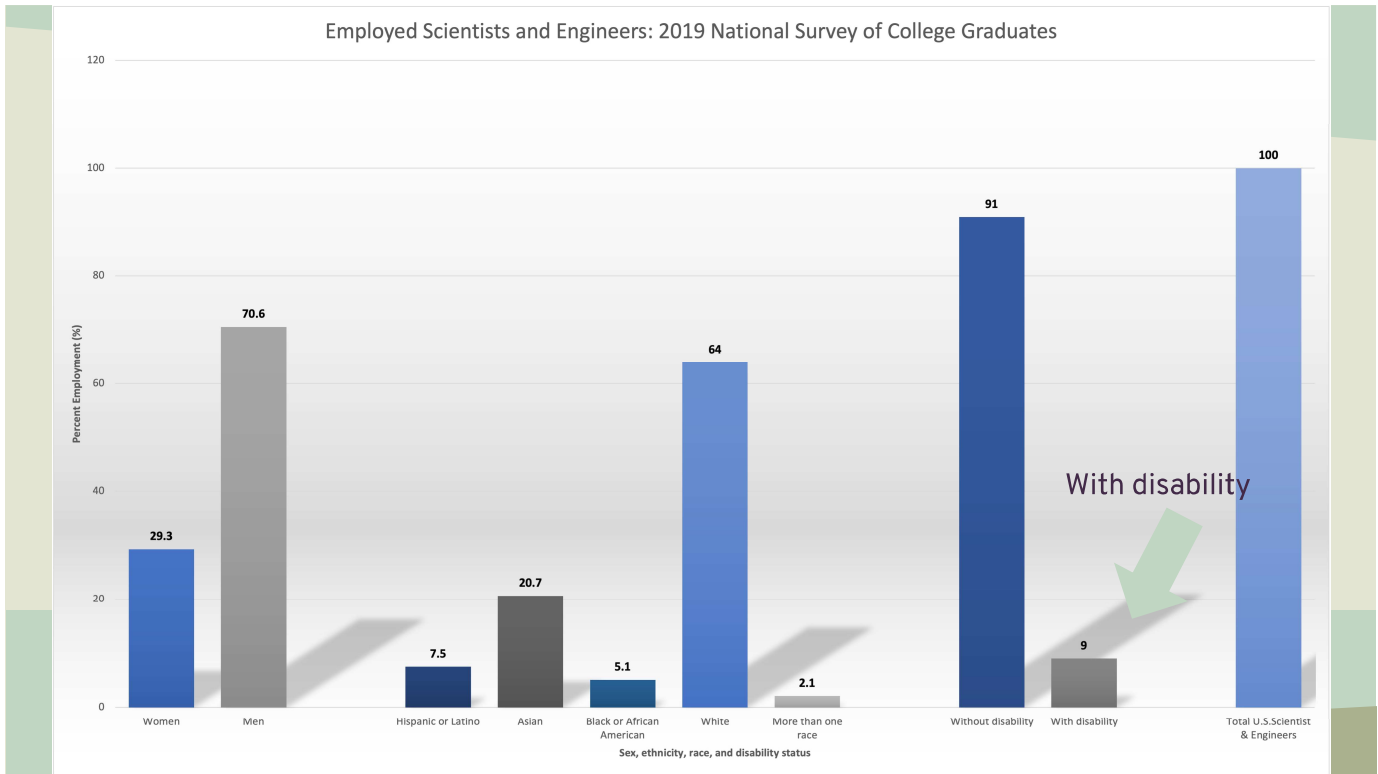




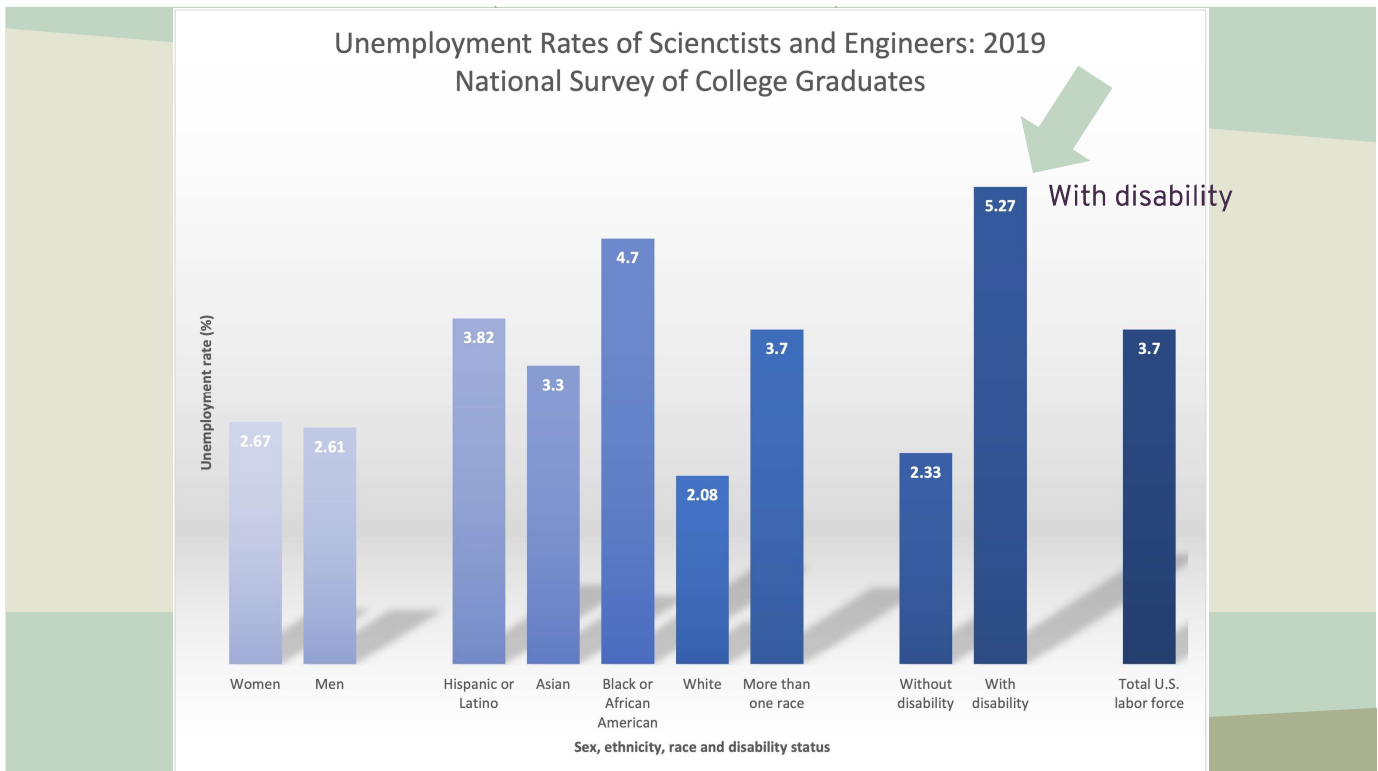
17



18



19



20

## STEM Professionals with Disabilities



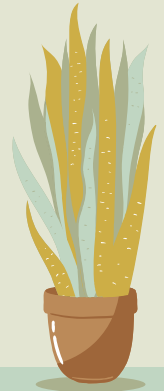
### Employed

Individuals with disabilities are employed in 9% of STEM jobs.



### Unemployed

Individuals with disabilities have the highest rate of unemployment in STEM.



21

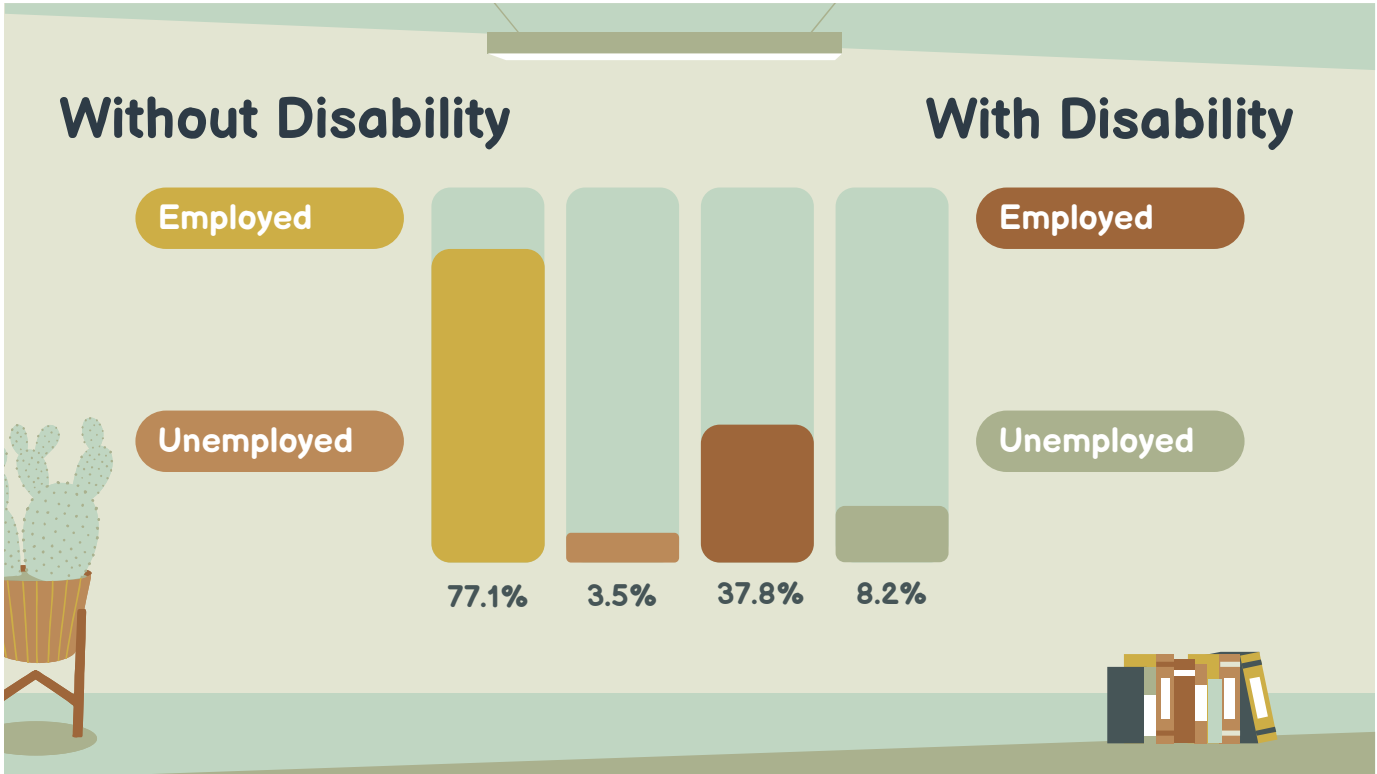
## 3b.

### Total Workforce Population

Do these trends apply in other professions?



22



23

**04.**

**Reflections**

What can we do to encourage students of all abilities to pursue their passions?

24

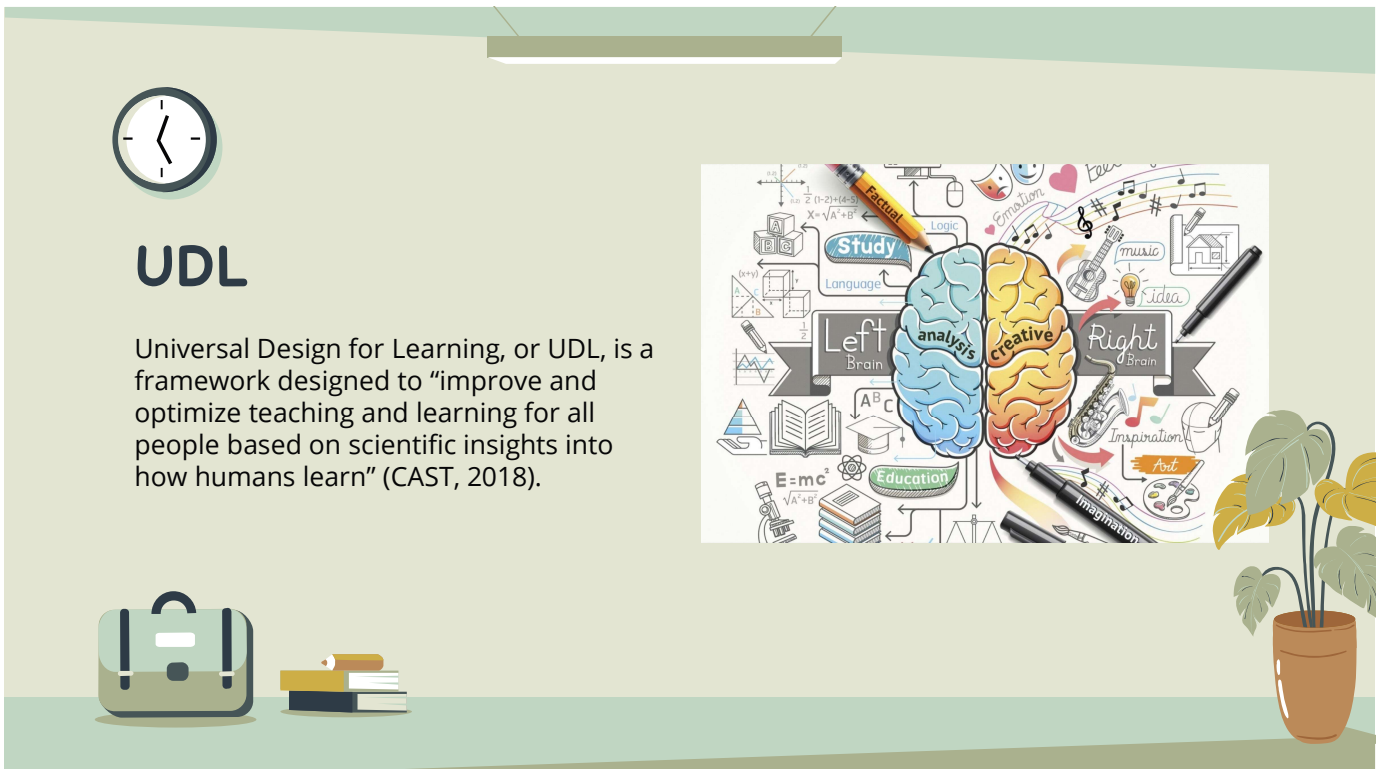


**4a.**

**Opportunity for All Learners**

How does the opportunity for all look in a classroom with varying needs?  
How can this be implemented without adding more to what is required of educators?

25



**UDL**

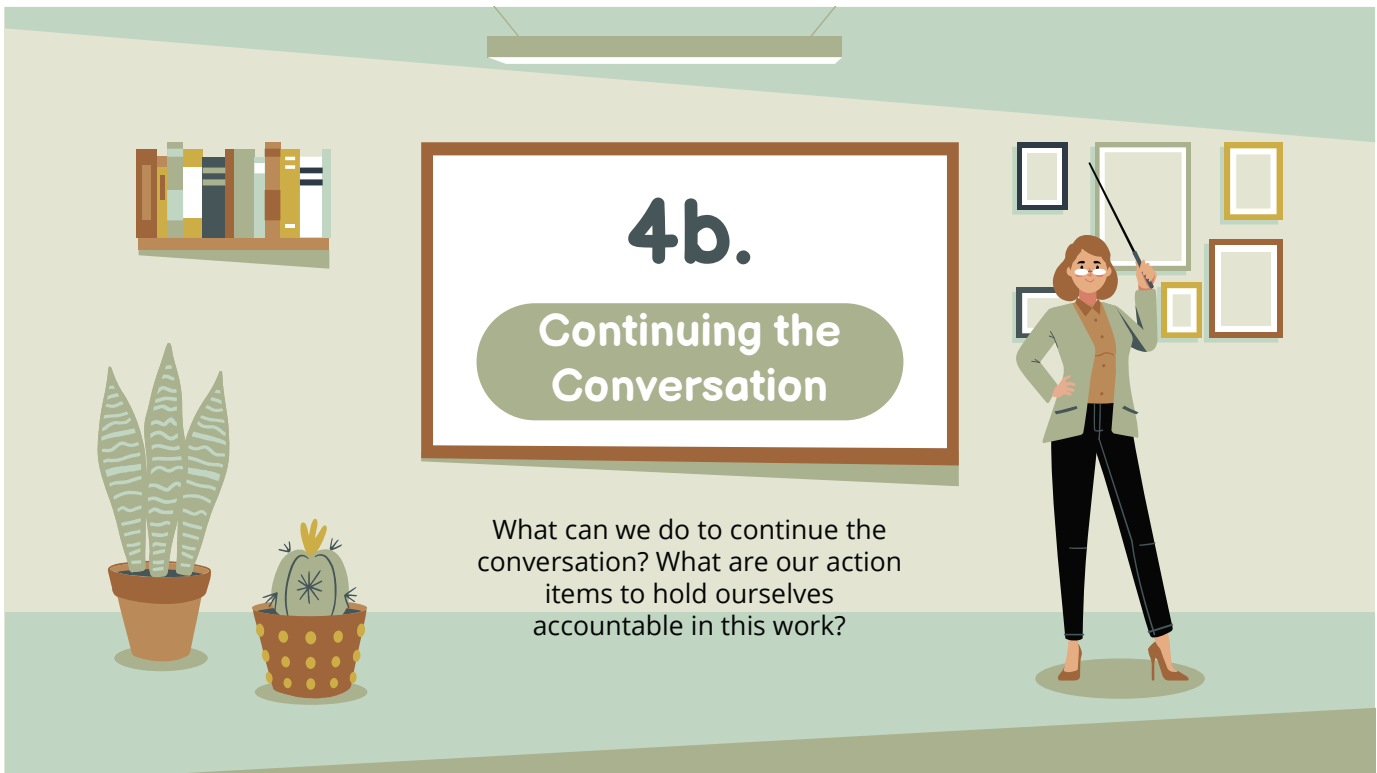
Universal Design for Learning, or UDL, is a framework designed to “improve and optimize teaching and learning for all people based on scientific insights into how humans learn” (CAST, 2018).

The diagram shows a brain divided into 'Left Brain' (analysis) and 'Right Brain' (creative). It is surrounded by various educational and creative icons: 'Study', 'Logic', 'Emotion', 'Music', 'Idea', 'Inspiration', 'Art', 'Education', 'Language', 'E=mc²', '√A²+B²', 'ABC', 'Logic', 'Emotion', 'Music', 'Idea', 'Inspiration', 'Art', 'Education', 'Language', 'E=mc²', '√A²+B²', 'ABC'.

26



27



28

## Identity First vs. Person First Language



"I am an individual with disabilities that is a researcher."

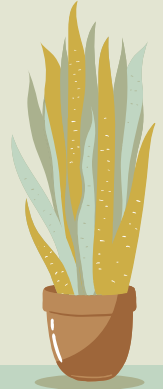


"I am a researcher."

"I am a paraplegic."



"I am a person with paraplegia."

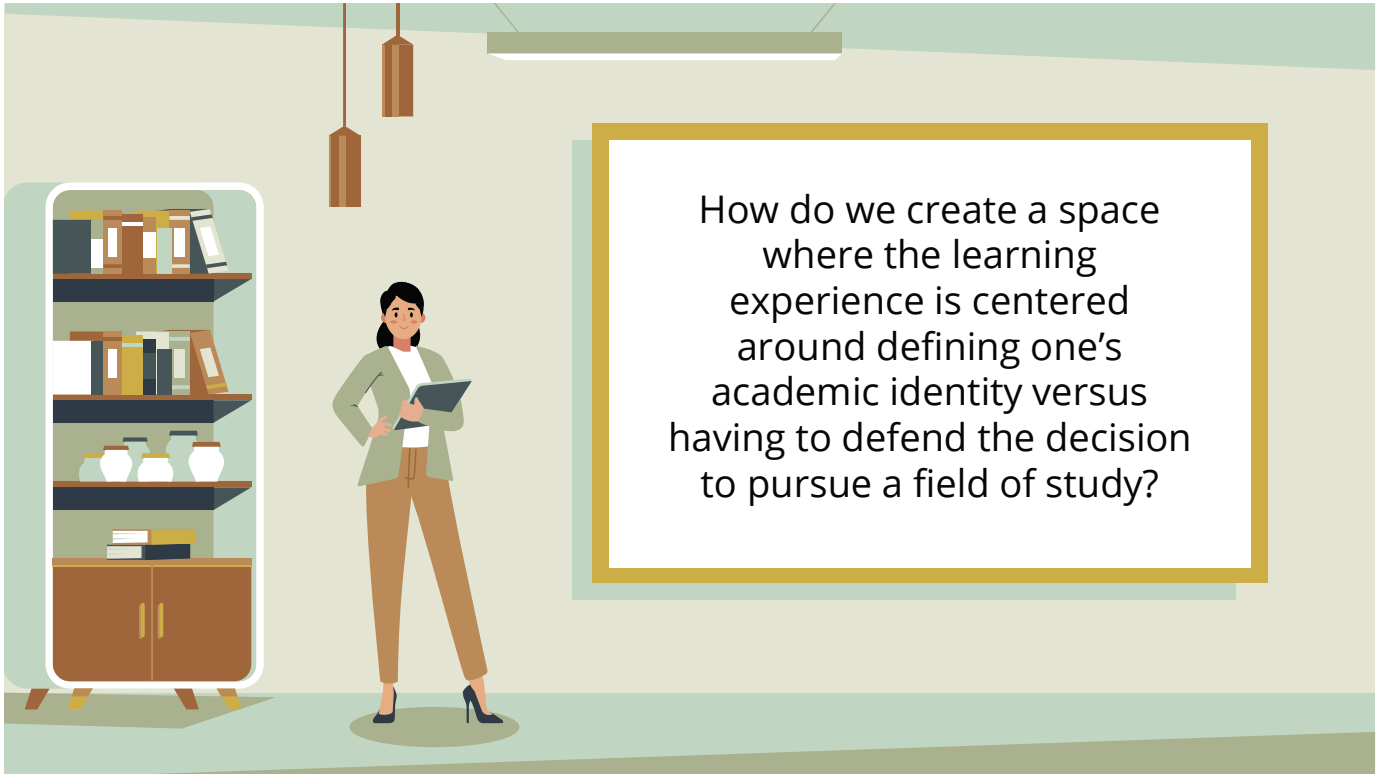


29

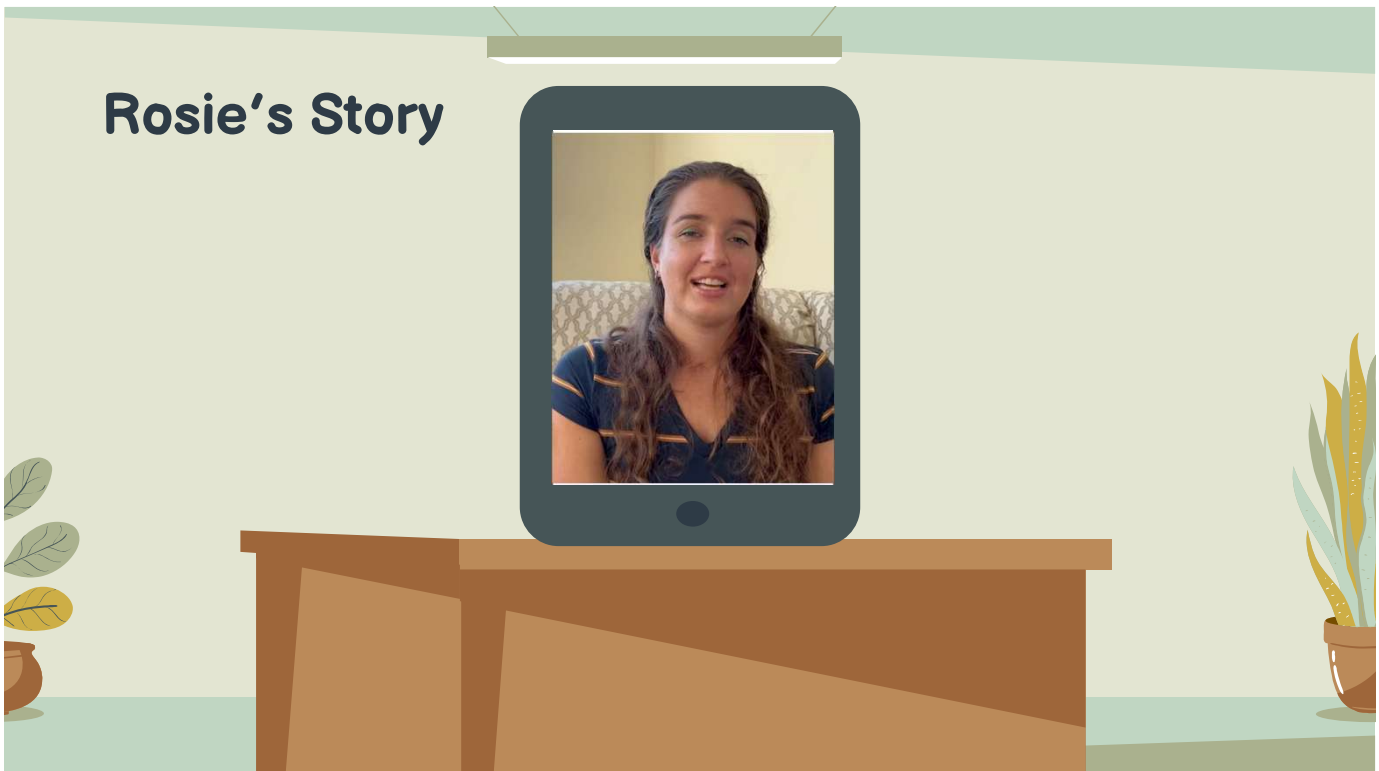
Do individuals with disabilities have to defend their decision to pursue their passion simply because they are different than the norm?



30

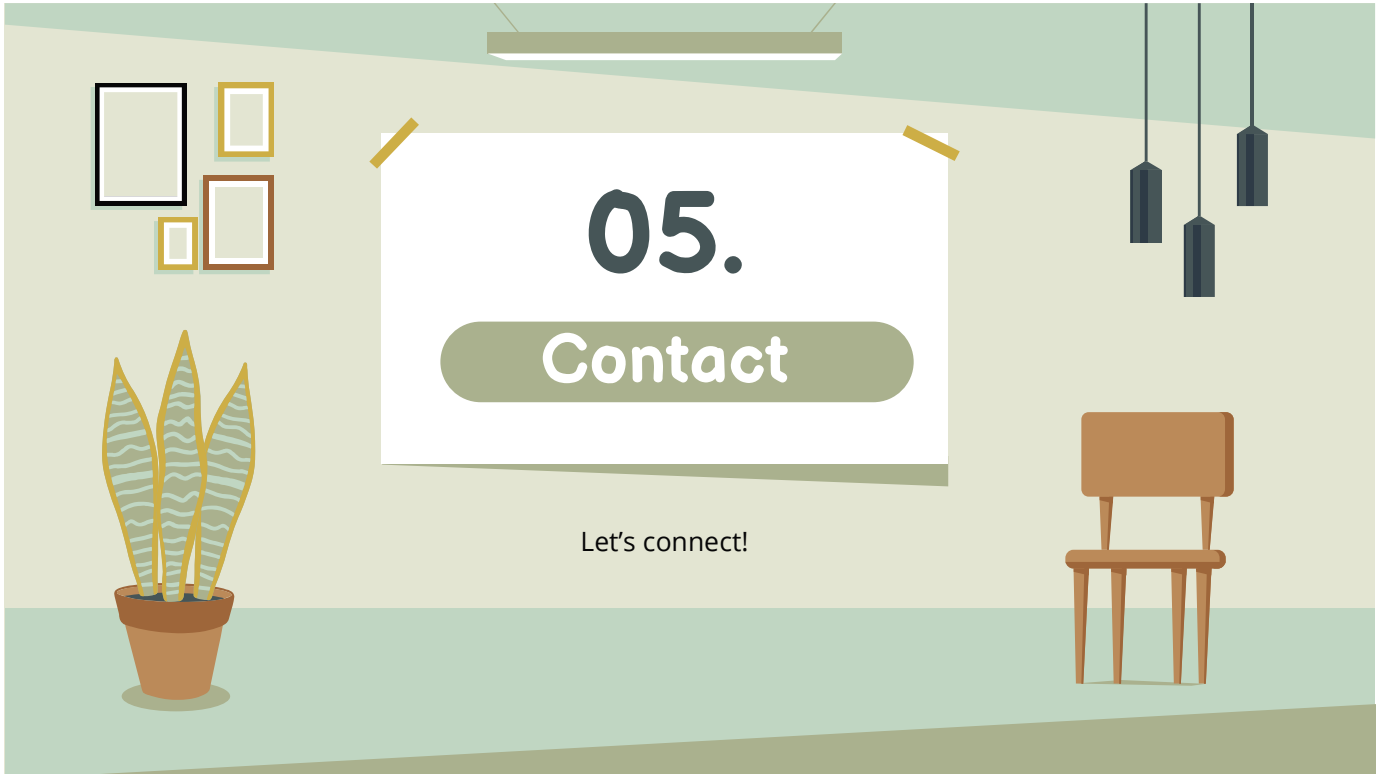


31

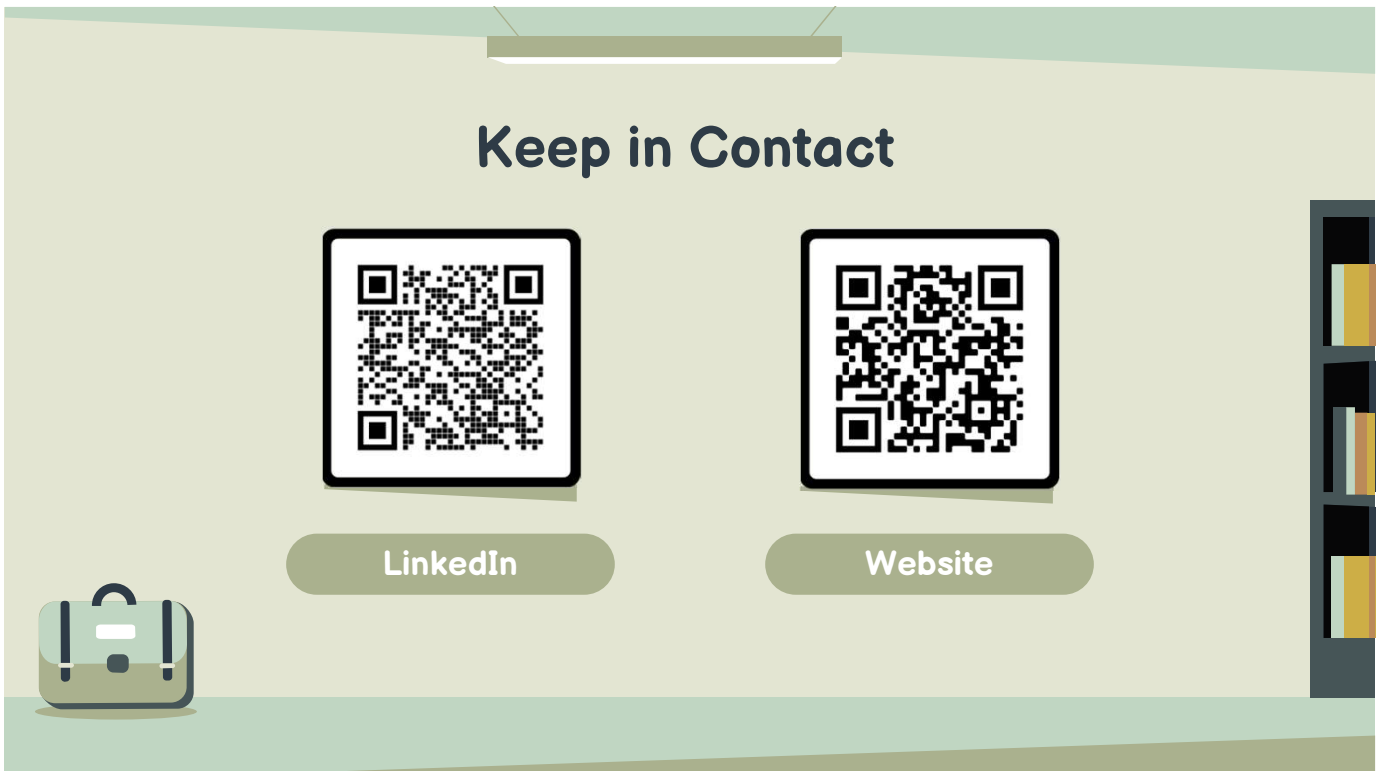


32

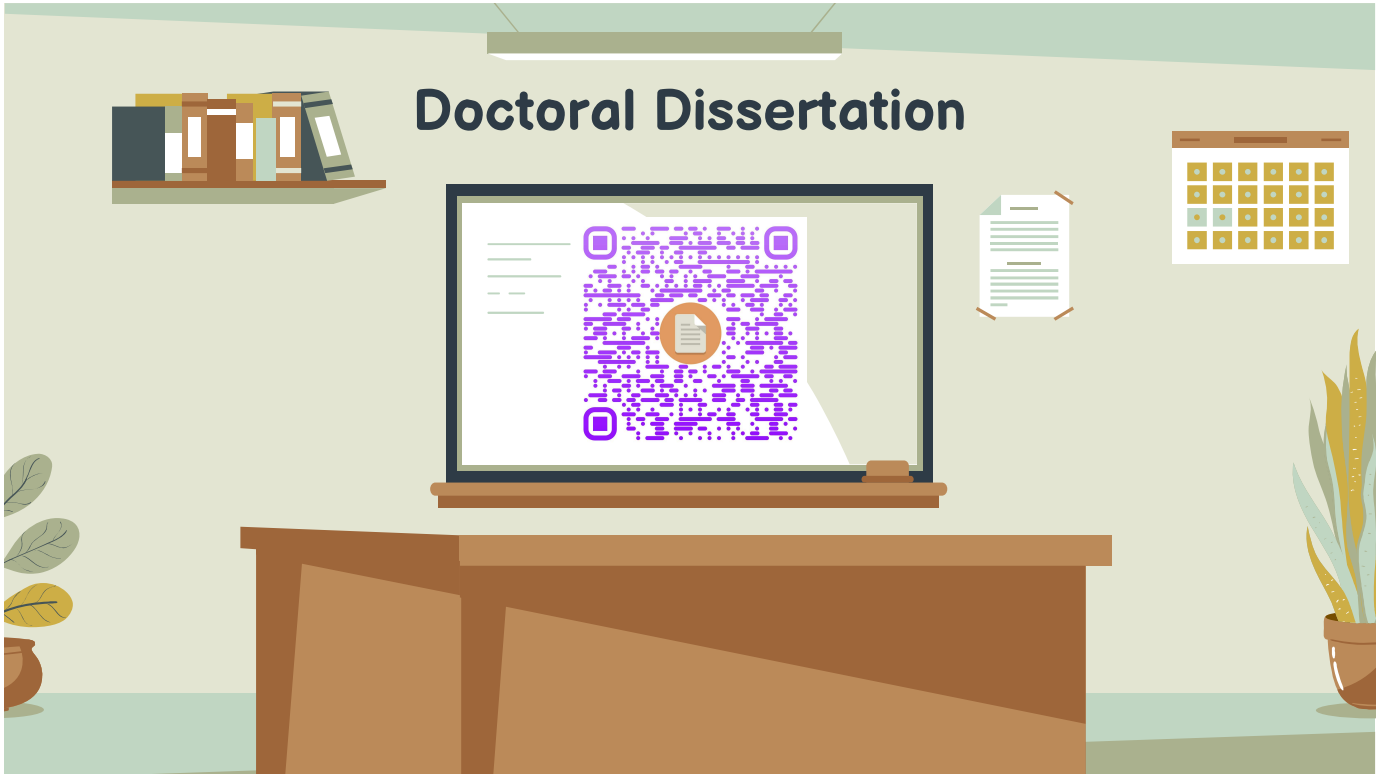




33



34



35



36

## References

- ADA National Network. (2022, June). *Reasonable accommodations in the workplace*. Retrieved June 30, 2022, from <https://adata.org/factsheet/reasonable-accommodations-workplace>
- American Psychological Association. (2012). *Reasonable accommodations explained*. Retrieved June 30, 2022, from <https://www.apa.org/pi/disability/dart/toolkit-three>
- Bureau of Labor Statistics U.S. Department of Labor. (2023). Persons with a disability: Labor force characteristics - 2022. <https://www.bls.gov/news.release/pdf/disabl.pdf>
- CAST. (2018). The UDL guidelines. <https://udlguidelines.cast.org/>
- Gensemer, C. (2021, October 13). *Scientists with disabilities are indispensable to the scientific community but receive little support*. MUSC. Retrieved September 14, 2022, from <https://gradstudies.musc.edu/about/blog/2021/10/disabilities-in-stem>
- National Center for Science and Engineering Statistics (NCSES). 2021. *National Survey of College Graduates: 2019*. NSF 22-310 Alexandria, VA: National Science Foundation. Available at <https://nces.nsf.gov/pubs/nsf22310/>.